

PEGASI

MO26F INSTRUCTION MANUAL FOR BASKETBALL STAND



WARNING:
IMPROPER INSTALLATION OR
SWINGING ON THE RING MAY
CAUSE SERIOUS INJURY
OR DEATH

Notice to assemblers:

- *All the basketball systems, including those used for displays must be assembled and ballasted according to instructions. Failure to follow instructions could result in serious injury.
- *Please read all warnings and cautions before assembly. It is recommended to supervise children as they play with this product. This product is to be assembled by 2 adults only!

1



SAFETY INSTRUCTIONS



To ensure safety, do not assemble this system without following the instructions. Check entire box and inside all packing material for parts before assembly. A high probability of serious injury exists if this system is not installed, maintained and operated properly.

- * The system should be moved by at least 3 adults capable of handling its weight. Children should not be allowed to move the system.
- * Check base (if applicable) regularly for leakage. Slow leaks could cause the system to tip over unexpectedly.
- * Stand in front of the system and pull the pole forward until the system is balanced on its wheels.
- * Move the system to the desired location and carefully set the base down.

! warning

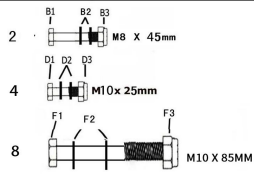
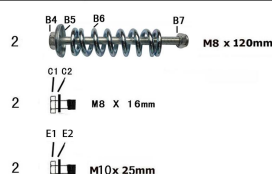
1. Do not hang on the rim or any parts of the system including backboard, support braces or net.
2. Never play on damaged equipment. Any problem with parts, please contact the customer service promptly.
3. Do not leave the system in an upright position without filling the base with weight, as the system may tip over and cause injury.
4. Do not allow the water to freeze in the base during sub-freezing weather. Please pour out the water and fill up the base with sand.
5. Keep the top pole and lifter pole covered with a cap all the time.
6. During play, do not wear jewelry (watches, necklaces, etc.) to avoid entangling in the net or losing it.
7. When adjusting height or moving the system, keep hands and fingers away from moving parts.
8. Do not allow children to move or adjust the system.

2

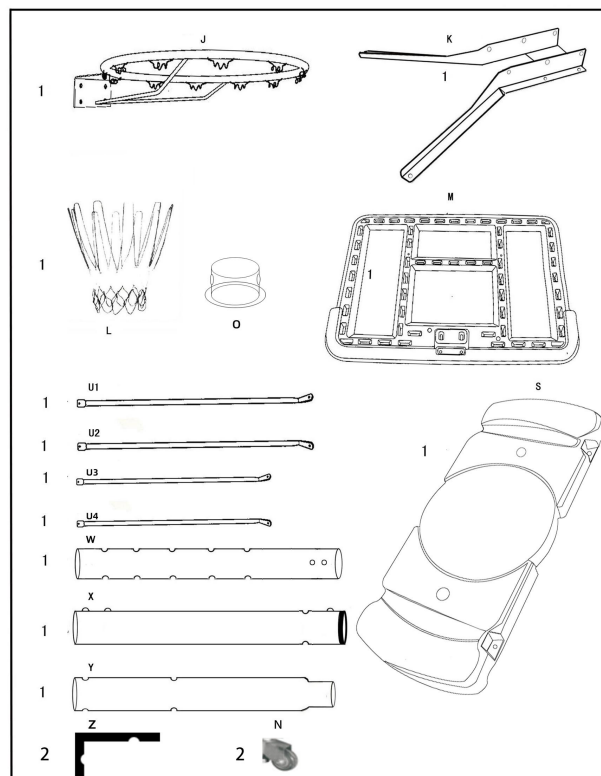
一、Spare parts

PART LIST

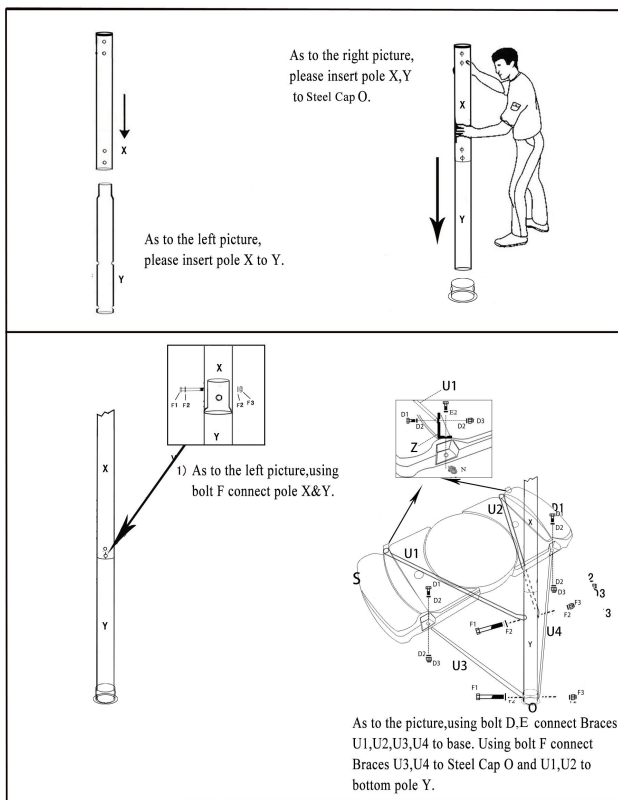
NO.	DESCRIPTION	QTY.	NOTE
B1, B2, B3	M8 X 45 MM	2	Connect Backboard, Rim & Bracket.
B4, B5, B6, B7	M8 X 120 MM	2	Connect Backboard, Rim & Bracket.
C1, C2	M8 X 16 MM	2	Connect Backboard & Bracket.
D1, D2, D3	M10 X 25 MM	4	Connect Base & Support brace.
E1, E2	M10 X 25 MM	2	Connect Base & Support brace.
F1, F2, F3	M10 X 85 MM	8	Connect Bottom Pole & Support brace. Connect Top Pole & Bracket. Connect Top Pole & Bottom Pole. Connect Bottom Pole & Middle Pole.
G	Wheel	2	
H	Cap	1	
I	Water cap	1	
J	Rim	1	
K	Bracket	1	
L	Basket Net	1	
M	Backboard	1	
U1	Support brace (right)	1	
U2	Support brace (left)	1	
U3	Support brace (lower left)	1	
U4	Support brace (lower right)	1	
O	Steel Cap	1	
W	Top Pole	1	
X	Bottom Pole	1	
Y	Middle Pole	1	
S	Base	1	
Z	L Connector	2	
N	Wheels	2	



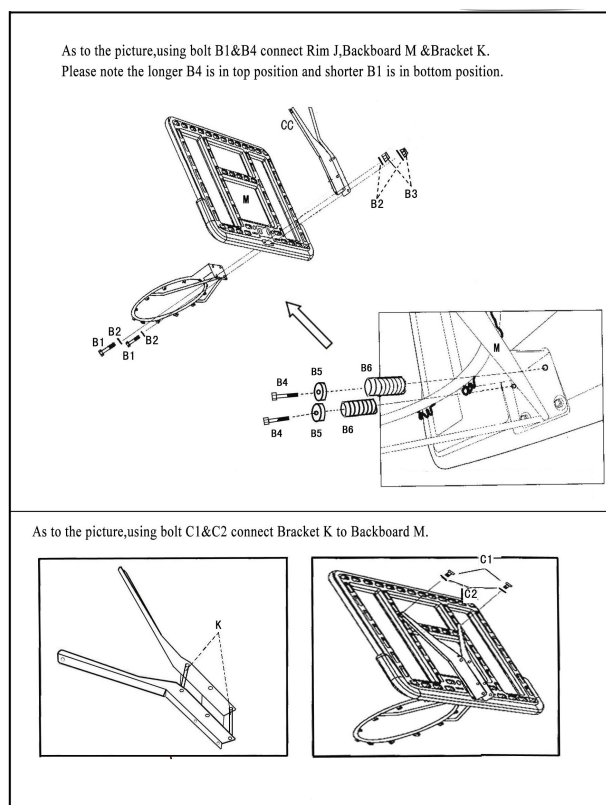
3



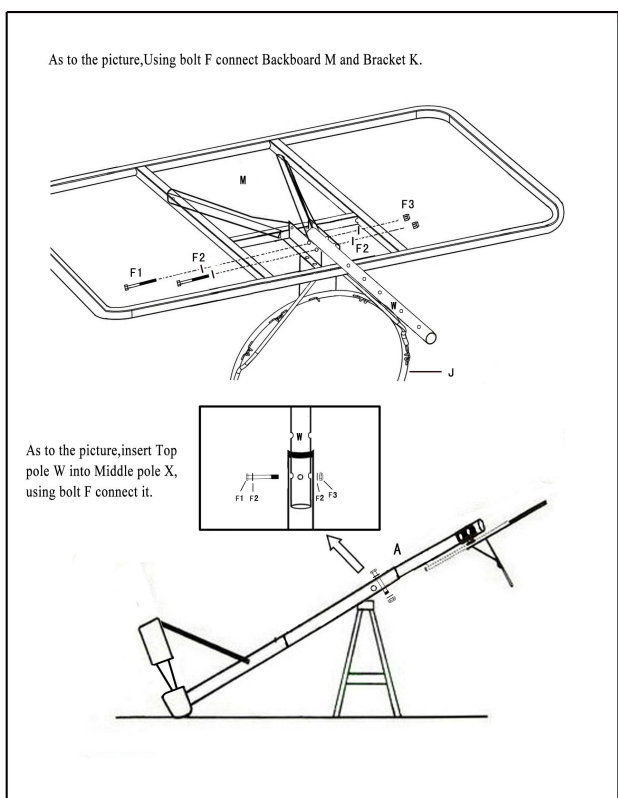
4



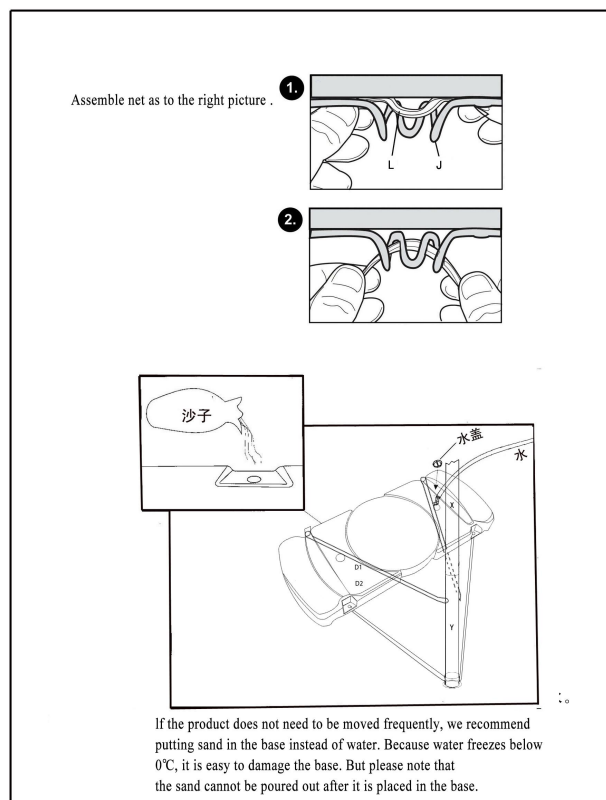
5



6



7



8

If the product does not need to be moved frequently, we recommend putting sand in the base instead of water. Because water freezes below 0°C, it is easy to damage the base. But please note that the sand cannot be poured out after it is placed in the base.